

surenqua

Survival Jerrycan User Manual

Table of Contents

Description of the Survival Jerrycan	3
IMPORTANT: Read instructions closely	4
How to use the Survival Jerrycan	7
How to Add & Remove Tubing from Tap.....	9
Backwashing the Survival Jerrycan	10
Pump Maintenance.....	12
Survival Jerrycan Hygiene.....	13
Maintenance & Storage instructions.....	13
Carbon Filter Unit	16
Installing the Carbon Filter Unit.....	17
Frequently Asked Questions.....	19
Warranty	23
Disclaimer.....	24
Contact Details.....	25

Welcome

Thank you for choosing the Sure Aqua's Survival Jerrycan.

Congratulations!

The Survival Jerrycan is quick and straightforward to use. For the immediate flow of filtered water, fill the tank with water and pump the handle for pressure.

Description of the Survival Jerrycan

The Survival Jerrycan is pre-assembled in the box and ready for use. All you need to do is fill the tank with water and start pumping.

Included in the standard Survival Jerrycan pack is;

- 18.5-liter tank
- Tap Assembly & Ultra-membrane Filter
- 3 pcs of 1/4" Polyethylene tube
- 1 Carbon Filter
- 1 Storage bag
- User Guide
- Operational guides stickers



IMPORTANT: Please read the instructions closely

Keep these instructions for future reference. If you do not understand these instructions or have any questions, please contact us on Service@SureAqua.com

There are instructional video's on the use and maintenance of the Survival Jerrycan at www.SureAqua.com/Instructions

Technical Specifications

Materials in contact with filtered water used in Survival Jerrycan are safe for water filtration and are B.P.A. and B.P.S. free.

Physical Construction

Height:	465 mm/18.3 in
Width:	353 mm/13.9 in
Depth:	168 mm/ 6.6 in
Dry Weight:	3.3 kilograms/7.3 lbs.
Tank Water Capacity:	18.5 liter/4.9 gallons

Operational Performance - Survival Jerrycan

Filtering Capacity:	Up to 40,000 liters (10,568 gallons)
Flow Rate when new:	1 liter/min (0.26 gallons/min)
Standard:	US EPA & WHO

Operational Performance - Carbon Filter

Filtering Capacity:	1,500 liters (396 gallons)
Flow Rate	1 liter/min (0.26 gallons/min)

Shelf Life

Survival Jerrycan 10 years when not been in use

Survival Jerrycan 5 years after it has been first used

Carbon Filter:	2 years in a sealed bag
Carbon Filter:	3 months after first use.

Operating & Storage Temperatures

Operating Temperatures:	0 °C to 45 °C 32 °F to 130 °F
-------------------------	----------------------------------

Storage Temperatures:	0 °C to 55 °C 32 °F to 150 °F
-----------------------	----------------------------------

Maximum Operating Pressure:	0.3 Bar
-----------------------------	---------

Survival Jerrycan User Guide

Microbiological Filtration Efficacy

Bacteria retention	99.9999% (Log 6)
Virus retention	99.99% (Log 4)
Cysts reduction	99.99% (Log 4)

Filter – Ultra Filtration Membrane

Chemical composition:	Polyethersulfone Polymer
Wall thickness:	150 μm \pm 30 μm
Inner diameter:	700 μm \pm 50 μm
Molecular Weight Cut Off:	70KD +/- 20KD (dextran, 90%, 0 bar)

Warnings

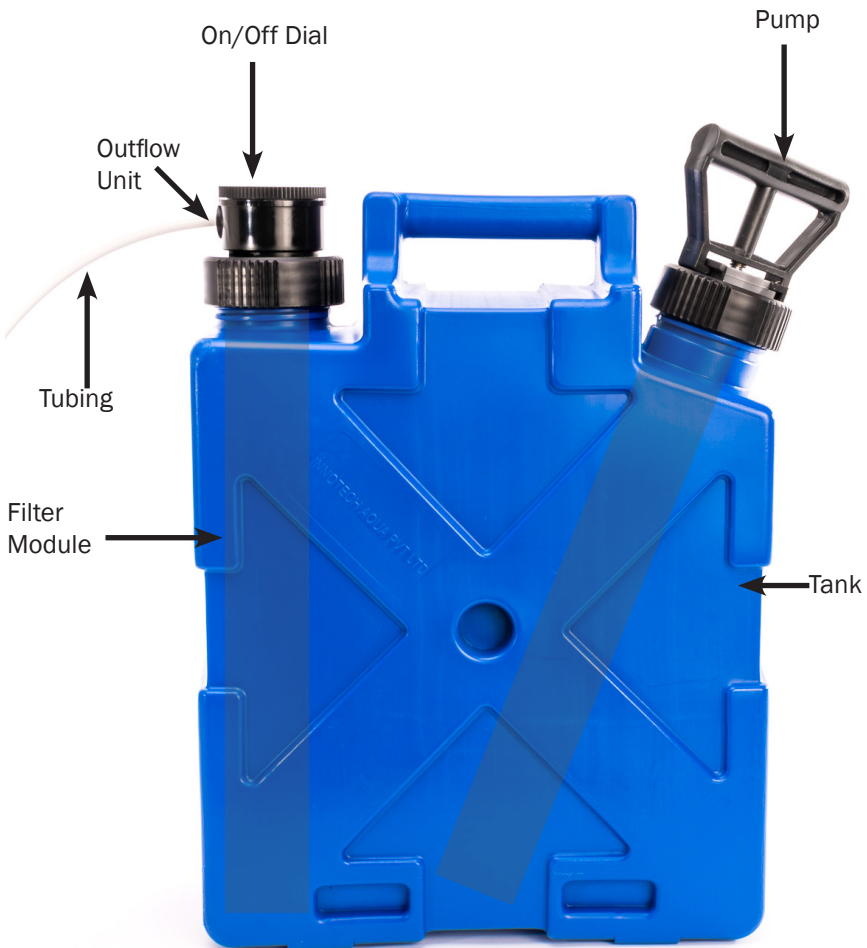
Before operating or installing the Survival Jerrycan, read the following safety instructions. Failure to follow these instructions and take heed of the warnings may result in serious injury.

This Survival Jerrycan is designed and manufactured solely for the purpose of filtering water. Under no circumstances may it be used for any other purposes.

Before using the Survival Jerrycan, all operators and users must have read and understood the contents of this guide and any other material supplied with the Survival Jerrycan. Never allow untrained personnel to operate the Survival Jerrycan.

Important:
Do not leave Survival Jerrycan pressurized.

Even though the product is simple to use, it is important to become familiar with the product before the first use in any environment. The diagram below shows the Survival Jerrycan with correct assembly.



How to use the Survival Jerrycan

1. Insert the outflow tube firmly into the outflow unit.

For detailed instructions, see “Connection of tube to the outflow unit.”



2. Remove pump by unscrewing anti-clockwise using the grip, then lift.

Do not try to unscrew with the pump handle.



3. Fill with water

Ensure untreated water does not contaminate the tap and the tube.



21 kg/
46 lbs

The Survival Jerrycan will become heavy, 21kg/46lbs, with a full tank of water.

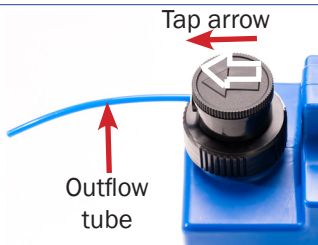
Ensure that you lift with caution

4. Place the pump into the tank and screw firmly into position using the grip on the cap.

Do not use the pump handle to tighten.



5. Make sure the tap arrow is in the direction of the outflow tube.



6. Start pumping at a steady pace and do not be overly exertive.



7. After 10 to 15 pump strokes, filtered water will start to flow. It is not necessary to continue pumping until the water flows.

It will take 10-15 seconds for the water to start flowing.

Once the water is flowing, it will be necessary to pump occasionally to keep the pressure up



**Do not over-pump the Survival Jerrycan
as it may damage.**

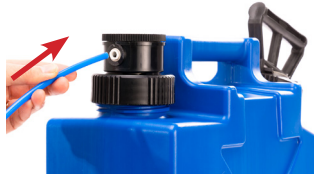
Notes

1. The time for water to flow will depend on the volume of water in the tank.
2. If filtered water flow is slow, the pump or the filter unit may need tightening, or the filter may need to be backwashed or replaced.

How to Add & Remove Tubing from Tap Connection of tube to the outflow unit.

1. To Insert tube, just push the tube into the “John Guest” fitting on the outflow unit.

You will need to push firmly. You will feel a “click” when it is locked in position.



2. Pull gently to ensure the tube is locked into position.



A spare plastic tube is provided for use with the Survival Jerrycan. Should you lose the tubes, it is freely available at most hardware stores (outer diameter of the tube is $\frac{1}{4}$ " or 6.35 mm).

Removing the Tube

Warning: To remove the tube, do not just pull the tube. This will damage the unit. Follow the instructions below.

1. Hold the tube and push toward the tap outflow unit.



2. Push the collet toward the outflow unit.



3. Pull the tube out while the collet is pushed in.

Do not attempt to pull out the tube without following steps 2 and 3.



Instructions for Backwashing the Survival Jerrycan

The filter membrane in the Survival Jerrycan acts like a micro-porous sieve that filters out particles in the water. To extend the service life of the filter and to dislodge these particles captured during the filtering process, backwashing of the filter is necessary.

The filter should be backwashed regularly. Frequent backwashing will preserve the life of the filter. Frequency of backwashing depends on the quality of the water being filtered.

At a minimum backwashing should be performed:

- ◇ If the flow of water slows down
- ◇ At the end of the day

Steps for Backwashing

1. Remove the pump from the tank



2. Fill the tank with clear water



3. Place the pump back into tank and tighten



4. Press down the outflow unit, and twist in an anti-clockwise direction.



5. Pull the outflow unit in the upward direction.



Survival Jerrycan User Guide

6. Ensure the tap arrow direction is parallel to the outflow unit tube



7. Start pumping until water is flowing out of the tube



8. While water is flowing, twist only the top section of the tap (with grip), so the arrow is 90° degrees to the tube.



9. Release the pressure in the tank by opening the pump.



10. Push outflow unit firmly down on the tap outflow unit.

Repeat steps 4 – 9 three to four times or until the water flow returns to normal.

This backwashing process will unblock filter pores



11. Once completed, push tap outflow unit down and twist to lock into position and ensure the arrow is parallel to tap.



Pump Maintenance

The pump has been specifically designed to efficiently pump air into the Survival Jerrycan tank and provide sufficient pressure to force the water through the filter membrane.

Should you have issues with the pump, contact us for support.



Survival Jerrycan Hygiene

The Survival Jerrycan must be kept clean and disinfected. We recommend the disinfection before and after storage. Please follow the Maintenance & Storage procedure to clean and disinfect the Survival Jerrycan,

Third party sterilization products

When using any sterilization, chemicals refer to the chemical manufacturer's label and safety instructions for safe handling procedures and the recommended personal protective clothing and safety equipment.

Survival Jerrycan Maintenance & Storage Instructions

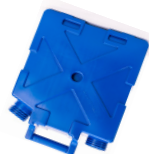
When storing the Survival Jerrycan after use, the undertake the following Maintenance Steps as it will prolong the life of the Survival Jerrycan filters. Make sure you store it in a dry, well air-ventilated, temperatures above 0°C /32 °F and lower than 55° C/130°F.

Steps for Preparing Survival Jerrycan for Storage

1. Open the tank and remove the pump and filter unit.



2. Empty the tank and rinse out any debris with sediment-free, clear water.



3. Fill half of the Jerrycan/tank with approximately 10 liters of clean water and add 50 ml of Milton Fluid (or compatible sterilizing fluid or tablet) to make a disinfecting solution in the Jerrycan/tank containing the clean water.

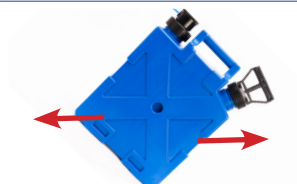
Refer to Chemical manufacturers' safety instructions for safe handling of chemicals.



4. Place the pump and filter units into tank and tighten



5. Agitate the sterilizing solution in the Jerrycan by turning the Jerrycan side to side several times over a 20 minute period.



6. Pump 2-3 liters of sterilizing solution through the filter.



7. Backwash the unit – 3-4 times - as per the backwash process



8. Remove the filter and pump – gentle shake- do not hit the filter



9. Empty the balance of the disinfected water and refill with 4-6 liters of clean tap water.



Survival Jerrycan User Guide

12. Remove pump and filter assembly and gently shake the excess water off the filter- do not hit the filter.



13. Empty the tank of the remaining water and place in upside down position for a few hours to dry



14. Place pump and filter into tank and tighten.
Pump 25-30 strokes three times at 5 minute intervals get air through filter.



15. Store the Survival Jerrycan away from direct sunlight in dry well-ventilated space that does not go below 0°C or 32°F or above 55°C or 130°F.

Note: When the Survival Jerrycan is to be used again, follow the disinfection process, then refill it with clean water and discard the first liter of filtered water.

The Survival Jerrycan is ready to use be used again.

Carbon Filter Unit

The Carbon Filter is not required to filter water. It is used to improve the taste of water, making it more palatable. The activated carbon used in the Carbon Filter reduces chlorine by-products, Volatile Organic Compounds (VOCs), and absorbs odors improving water palatability.



Note: On the first use of the Carbon Filter, there may be some minor carbon particles (dust) that come out of the unit. There is no danger in these particles. Just throw out the first one or two liters of filtered water.

Technical Specification

Diameter	42 mm/ 1.65 in
Length	90 mm/3.5 in
Filtration Capacity	1,500 liter/396 gallons
Total weight:	70 gram/2.45 oz
Carbon weight	30 gram/1.05 oz
Flow Rate:	1 liter/minute -0.26 gallons/minute
Carbon:	Organic Activated Coconut Shell
Flow direction:	Filtration can be from either direction

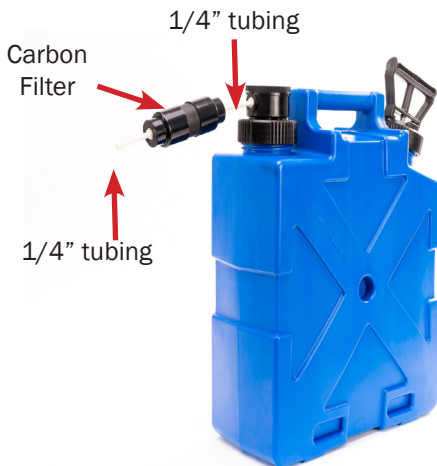
Shelf Life

Carbon Filter:	2 years in a sealed bag
Carbon Filter:	3 months after first use.

Operating & Storage Temperatures

Operating Temperature:	0°C to 55°C 32°F to 130°F
Storage Temperature:	0°C to 65°C 32°F to 150°F

Carbon Filter Configuration



Installing Instructions for the Carbon Filter Unit

1. Push the 1/4" tubes supplied with the carbon filter into the two "John Guest" fittings located at each end of the carbon filter.



2. Push the 1/4" tube of either end of the carbon filter unit into the outflow unit of the Survival Jerrycan.

It does not matter which way the filter is attached. It is bidirectional.



Removing the Tube From The Carbon Filter

1. Use a finger to press down the collet (outer ring) of the John Guest fitting on the carbon filter.



2. While pressing down the collet, pull the tube out from the carbon filter.



Storing the Carbon Filter

Once it has been used, the Carbon Filter will last 3 months or 50-70 tanks fulls of filtered water.

Once removed the Carbon Filter from the Survival Jerrycan, shake gently to remove all the excess water and place in plastic bag as water will still drip out over time.

When transporting the unit its best to remove the Carbon Filter and store it in a plastic bag,

Frequently Asked Questions

Question: The outflow unit won't turn or lift?

Answer: Strike it with an open hand to loosen the outflow unit. Press down the Outflow unit, and twist in an anti-clockwise direction.

Question: Water is not flowing from the tube?

Answer: Should you have trickling or no flow from the tube, follow the following instructions

1. Ensure the pump and filter are screwed on tightly – no air is leaking.
2. Make sure arrow on outflow Tap is aligned to the outflow tube.
3. Check the seal under the thread of the Pump and filter is not damaged or twisted.
4. Increase the amount of water in the Jerrycan.
5. Backwash the filter
6. If all the above does not work, the filter may need to be placed.

Question: What about the water around the tap when you are pumping?

Answer: This is because there is very high pressure being placed inside the tank. Note that the water around the tap is clean, safe bacteria-free water.

Question: How often should I backwash the Survival Jerrycan?

Answer: It is beneficial to establish a habit of daily backwashing to ensure the filter continues to operate to its maximum capacity.

With low quality water (water with sediment) backwash more frequently or when the filtered water flow reduces to $\frac{3}{4} \sim \frac{1}{2}$ of the 'as new' flow rate.

Question Should I leave the tube when transporting the Survival Jerrycan?

Answer: You may remove or leave the tube attached to the Jerrycan when traveling, though it is recommended to remove and store a safe place.

Question: Water stops flowing after I stop pumping?

Answer. This is because the pressure is required in the tank for the water to flow. Once the filtered water is flowing, you can keep the pressure up with a few pumps every 15-20 seconds.

Question: How much water can be put in the Survival Jerrycan tank?

Answer. Approximately 18.5 liters of water.

Question: What is the optimum water level in the tank?

Answer. The Survival Jerrycan works best when full, though it can work effectively until almost empty.

Question: How do I store the Survival Jerrycan?

Answer: Follow the detailed Storage Instruction earlier in the User Guide to ensure the longevity of the Survival Jerrycan.

Question: How do I store the Carbon Filter when not in use?

Answer: Store the carbon filter in the reusable plastic bag provided. Place a date on the plastic bag so that you know when to replace the carbon filter.

Question: Can I use the Survival Jerrycan with the Carbon Filter?

Answer: Yes. The bacteria and viruses will be removed from the water by the Survival Jerrycan UF filter. The Carbon Filter can be attached to the Survival Jerrycan if you need to improve taste or smell.

Question: Has the Survival Jerrycan been tested?

Answer: The Survival Jerrycan has been extensively tested and has never failed a test. Governments around the world have tested the Survival Jerrycan. See our website for test results. www.SureAqua.com

Survival Jerrycan User Guide

- Question:** *Is the Survival Jerrycan operational tested before I receive it?*
- Answer:** Every single Survival Jerrycan filter is tested to ensure it is working correctly.
- Question:** *What is a John Guest Fitting?*
- Answer:** John Guest is the leading manufacturer of push-fit fittings. The Sure Aqua products use the inch fitting in our products.
- Question:** *Should I be concerned about the first carbon dust out of the Carbon Filter?*
- Answer:** There should be some minor carbon dust on the first use of the Carbon Filter. The carbon dust will go away after several liters of water passes through the Carbon Filter.
- Question:** *Where can I purchase the 1/4" Polyethylene tube?*
- Answer:** Most hardware stores or water filter shops will carry this tube.
- Question:** *What and where can I purchase a cleaning/disinfecting tablets of fluid?*
- Answer:** There are a number of different disinfection products that can be used to clean and disinfect the Survival Jerrycan and filter, including Puritab, Micropur or Milton.
- They are available at TESCO, Amazon, hardware stores, supermarkets etc.
- Question:** *What happens if I drop the Survival Jerrycan?*
- Answer:** The Jerrycan is robust and is able to withstand general knock and vibrations. Where severe knocks occur, the Survival Jerrycan may get damaged. We recommend that you replace the filter unit with a new one. If you do not want to replace the filter, you will need to have the filtered water from the Survival Jerrycan tested by an authorized testing laboratory to confirm that the filter is undamaged before using the Survival Jerrycan again.
- Question:** *Does the Survival Jerrycan remove ions?*
- Answer:** The Survival Jerrycan does not remove ions.

Question: *What type of water can I fill the tanks*

Answer: The product works best when filtering the best quality water. However it can filter water that contains sediment and has a high turbidity. As the water quality reduces, so does the need for backwashing increase.

Question: *How long will the Survival Jerrycan last*

Answer: The Survival Jerrycan can last many years with correct use and maintenance

Question: *Can Survival Jerrycan be used with sea water?*

Answer: The Survival Jerrycan cannot take-out salt from water

Question: *Does the Survival Jerrycan take chemicals out of the water?*

Answer: No the Survival Jerrycan does not take chemicals out of the water.

If there is a concern about chemicals, we suggest using our Arsenic and Fluoride reduction products to help reduce the level of Arsenic and Fluoride out of water.

If in doubt, always ask local authorities if there is high levels of chemicals in the water. Never use any water that is run off highways, shopping centers or near factories.

Question: *Does the Survival Jerrycan take the taste out of the water?*

Answer: No the Survival Jerrycan does not take the taste out of the water, It removes bacteria, viruses and cysts.

We recommend that you use the Carbon Filter to connect to the tap head to remove a significant amount of ill tasting water.

Question: *What happens if you over pump the Survival Jerrycan?*

Answer You may damage the seals or even cause the body to rupture. It is normal to see some swelling of the body during use, but excessive pumping will damage it.

Warranty

Provided operating and maintenance instructions are observed, and the Survival Jerrycan ("product") is used for its intended purpose, the Survival Jerrycan is warranted for a period of 24 months for the tank and 12 months for the Filter and Pump units from the date of purchase to be free from defects in materials and workmanship.

If there is a breach of this Warranty, return the Survival Jerrycan to the retailer from which it was purchased together with the receipt issued at point of sale to verify the date of purchase. The retailer is not authorized to replace the Survival Jerrycan but to return it to Sure Aqua Corporation Pty Ltd (Sure Aqua). Sure Aqua, at its discretion and cost, can then either repair or replace the defective Survival Jerrycan or component.

To the full extent permitted by law, all other warranties and conditions are excluded, including warranties and conditions implied by statutes as to fitness or purpose and merchantability. Save for the Warranty contained in this leaflet, Sure Aqua and the retailer from which the Survival Jerrycan was purchased are released from and are not to be liable for costs, expenses, damages, or liabilities which are incurred or sustained as a result of or in connection with use and operation of the product irrespective of how these costs, expenses, damages or liabilities arise and irrespective of whether they are direct, indirect or consequential.

This Warranty is the only Warranty applicable to the Survival Jerrycan and, to the maximum extent permitted by law, is expressly in lieu of any other conditions or warranties expressed or implied in relation to the Survival Jerrycan.

Sure Aqua does not authorize any person to create for it any other obligation or liability in connection with the Survival Jerrycan.

This Warranty Covers only conditions resulting directly from defects in workmanship or material under normal use and service.

Warranty Exclusions

This Warranty specifically does not cover:

1. Conditions resulting from misuse, use of incompatible fluids, exceeding product specifications including overloading, impact damage, negligence, accidental damage, or failure to perform recommended maintenance services and replacement of items such as filter unit, rubber seals and pump.
2. Incidental costs associated with a warranty repair including any travel costs, out of hour's labor charges, cleaning costs, transportation costs, freight costs, or any communication costs.

Disclaimer

All information contained herein is provided in good faith and subject to change at any time without notice, errors, and omissions.

The information in this User Guide is correct at the time of creating this User Guide.

Because of the many particular factors which are outside our knowledge and control and affect the use of the product, no warranty is given or is to be implied with respect to either such information or the product itself, in particular the suitability of the product for any particular purpose. The purchaser should independently determine the suitability of the product for the intended application.

Contact Details

To contact Sure Aqua, you can use one of the following.



www.SureAqua.com



Service@SureAqua.com



SureAqua



+61 438687860



PO Box 1073
Epping NSW 1710
Australia

© 2020 Sure Aqua Corporation Pty Ltd.
All Rights Reserved.

SureAqua is a registered trademark.

